



REFRIGERATED DISPLAY

MODEL: STRAIGHT 955



SPECIFICATIONS

Power	200 Watt
Connection	230V / 50Hz / 1Phase
Nett Weight	36.0 Kg
Gross Weight	52.0 Kg
Machine Dimensions	H435 x W955 x D395 mm
Packaging Dimensions	H460 x W1050 x D460 mm
Packaging Volume	0.22 CBM
Packaging Material	Wooden Box with Foam
HS Customs Code	84185019
EAN Code	8719632122494
Article Number	09400317

Luxury refrigerated display with glass case
 Stainless steel housing and supports
 Capacity 3 x 1/3 GN
 Fitted with adjustable feet
 Dixell digital temperature controller
 Static cooling
 Foamed evaporator
 Refrigerant R600a / CFC-free
 Temperature 0 ° to + 10 ° Celsius
 Automatic defrost
 Anti Condense System

Excluding: GN containers and lids

- 👑 HIGH QUALITY / LOW PRICES
- 👑 24 / 7 SUPPORT & SERVICE
- 👑 IMMEDIATELY AVAILABLE FROM STOCK
- 👑 TECHNICAL DEPARTMENT & WARRANTY
- 👑 EXCELLENT CUSTOMER SATISFACTION



Stainless steel housing with capacity of 3 x 1/3 GN



Static cooling with foamed evaporator



Dixell digital temperature controller



REFRIGERATED DISPLAY

MODEL: STRAIGHT 1200



SPECIFICATIONS

Power	200 Watt
Connection	230V / 50Hz / 1Phase
Nett Weight	40.5 Kg
Gross Weight	60.0 Kg
Machine Dimensions	H435 x W1200 x D395 mm
Packaging Dimensions	H460 x W1300 x D460 mm
Packaging Volume	0.28 CBM
Packaging Material	Wooden Box with Foam
HS Customs Code	84185019
EAN Code	8719324276290
Article Number	09400320

Luxury refrigerated display with glass case
 Stainless steel housing and supports
 Capacity 4 x 1/3 GN or 3 x 1/3 + 1/2 GN
 Fitted with adjustable feet
 Dixell digital temperature controller
 Static cooling
 Foamed evaporator
 Refrigerant R600a / CFC-free
 Temperature 0 ° to + 10 ° Celsius
 Automatic defrost
 Anti Condense System

Excluding: GN containers and lids

- 👑 HIGH QUALITY / LOW PRICES
- 👑 24 / 7 SUPPORT & SERVICE
- 👑 IMMEDIATELY AVAILABLE FROM STOCK
- 👑 TECHNICAL DEPARTMENT & WARRANTY
- 👑 EXCELLENT CUSTOMER SATISFACTION



Stainless steel housing with capacity of 4 x 1/3 GN or 3 x 1/3 + 1/2 GN



Static cooling with foamed evaporator



Dixell digital temperature controller



REFRIGERATED DISPLAY

MODEL: STRAIGHT 1400



SPECIFICATIONS

Power	200 Watt
Connection	230V / 50Hz / 1Phase
Nett Weight	45.5 Kg
Gross Weight	68.0 Kg
Machine Dimensions	H435 x W1400 x D395 mm
Packaging Dimensions	H460 x W1490 x D460 mm
Packaging Volume	0.32 CBM
Packaging Material	Wooden Box with Foam
HS Customs Code	84185019
EAN Code	8719324276306
Article Number	09400323

Luxury refrigerated display with glass case
 Stainless steel housing and supports
 Capacity 6 x 1/3 GN
 Fitted with adjustable feet
 Dixell digital temperature controller
 Static cooling
 Foamed evaporator
 Refrigerant R600a / CFC-free
 Temperature 0 ° to + 10 ° Celsius
 Automatic defrost
 Anti Condense System

Excluding: GN containers and lids

- 👑 HIGH QUALITY / LOW PRICES
- 👑 24 / 7 SUPPORT & SERVICE
- 👑 IMMEDIATELY AVAILABLE FROM STOCK
- 👑 TECHNICAL DEPARTMENT & WARRANTY
- 👑 EXCELLENT CUSTOMER SATISFACTION



Stainless steel housing with capacity of 6 x 1/3 GN



Static cooling with foamed evaporator



Dixell digital temperature controller



REFRIGERATED DISPLAY

MODEL: STRAIGHT 1500



SPECIFICATIONS

Power	200 Watt
Connection	230V / 50Hz / 1Phase
Nett Weight	48.0 Kg
Gross Weight	72.0 Kg
Machine Dimensions	H435 x W1500 x D395 mm
Packaging Dimensions	H460 x W1590 x D460 mm
Packaging Volume	0.34 CBM
Packaging Material	Wooden Box with Foam
HS Customs Code	84185019
EAN Code	8719324276313
Article Number	09400326

Luxury refrigerated display with glass case
 Stainless steel housing and supports
 Capacity 6 x 1/3 GN or 5 x 1/3 + 1/2 GN
 Fitted with adjustable feet
 Dixell digital temperature controller
 Static cooling
 Foamed evaporator
 Refrigerant R600a / CFC-free
 Temperature 0 ° to + 10 ° Celsius
 Automatic defrost
 Anti Condense System

Excluding: GN containers and lids

- 👑 HIGH QUALITY / LOW PRICES
- 👑 24 / 7 SUPPORT & SERVICE
- 👑 IMMEDIATELY AVAILABLE FROM STOCK
- 👑 TECHNICAL DEPARTMENT & WARRANTY
- 👑 EXCELLENT CUSTOMER SATISFACTION



Stainless steel housing with capacity of 6 x 1/3 GN or 5 x 1/3 + 1/2 GN



Static cooling with foamed evaporator



Dixell digital temperature controller



REFRIGERATED DISPLAY

MODEL: STRAIGHT 1600



SPECIFICATIONS

Power	200 Watt
Connection	230V / 50Hz / 1Phase
Nett Weight	50.5 Kg
Gross Weight	76.0 Kg
Machine Dimensions	H435 x W1600 x D395 mm
Packaging Dimensions	H460 x W1690 x D460 mm
Packaging Volume	0.36 CBM
Packaging Material	Wooden Box with Foam
HS Customs Code	84185019
EAN Code	8719324276320
Article Number	09400329

Luxury refrigerated display with glass case
 Stainless steel housing and supports
 Capacity 7 x 1/3 GN
 Fitted with adjustable feet
 Dixell digital temperature controller
 Static cooling
 Foamed evaporator
 Refrigerant R600a / CFC-free
 Temperature 0 ° to + 10 ° Celsius
 Automatic defrost
 Anti Condense System

Excluding: GN containers and lids

- 👑 HIGH QUALITY / LOW PRICES
- 👑 24 / 7 SUPPORT & SERVICE
- 👑 IMMEDIATELY AVAILABLE FROM STOCK
- 👑 TECHNICAL DEPARTMENT & WARRANTY
- 👑 EXCELLENT CUSTOMER SATISFACTION



Stainless steel housing with capacity of 7 x 1/3 GN



Static cooling with foamed evaporator

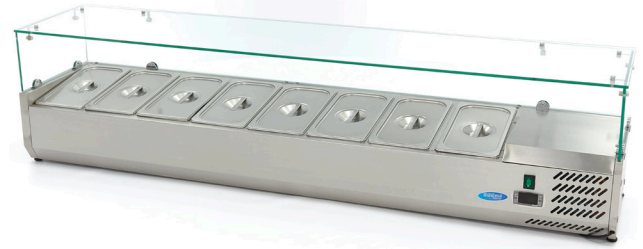


Dixell digital temperature controller



REFRIGERATED DISPLAY

MODEL: STRAIGHT 1800



SPECIFICATIONS

Power	200 Watt
Connection	230V / 50Hz / 1Phase
Nett Weight	55.5 Kg
Gross Weight	84.0 Kg
Machine Dimensions	H435 x W1800 x D395 mm
Packaging Dimensions	H460 x W1880 x D460 mm
Packaging Volume	0.40 CBM
Packaging Material	Wooden Box with Foam
HS Customs Code	84185019
EAN Code	8719324276337
Article Number	09400332

Luxury refrigerated display with glass case
 Stainless steel housing and supports
 Capacity 8 x 1/3 GN
 Fitted with adjustable feet
 Dixell digital temperature controller
 Static cooling
 Foamed evaporator
 Refrigerant R600a / CFC-free
 Temperature 0 ° to + 10 ° Celsius
 Automatic defrost
 Anti Condense System

Excluding: GN containers and lids

- 👑 HIGH QUALITY / LOW PRICES
- 👑 24 / 7 SUPPORT & SERVICE
- 👑 IMMEDIATELY AVAILABLE FROM STOCK
- 👑 TECHNICAL DEPARTMENT & WARRANTY
- 👑 EXCELLENT CUSTOMER SATISFACTION



Stainless steel housing with capacity of 8 x 1/3 GN



Static cooling with foamed evaporator



Dixell digital temperature controller



REFRIGERATED DISPLAY

MODEL: STRAIGHT 2000



SPECIFICATIONS

Power	200 Watt
Connection	230V / 50Hz / 1Phase
Nett Weight	60.0 Kg
Gross Weight	92.0 Kg
Machine Dimensions	H435 x W2000 x D395 mm
Packaging Dimensions	H460 x W2090 x D460 mm
Packaging Volume	0.44 CBM
Packaging Material	Wooden Box with Foam
HS Customs Code	84185019
EAN Code	8719324276344
Article Number	09400335

Luxury refrigerated display with glass case
 Stainless steel housing and supports
 Capacity 9 x 1/3 GN
 Fitted with adjustable feet
 Dixell digital temperature controller
 Static cooling
 Foamed evaporator
 Refrigerant R600a / CFC-free
 Temperature 0 ° to + 10 ° Celsius
 Automatic defrost
 Anti Condense System

Excluding: GN containers and lids

- 👑 HIGH QUALITY / LOW PRICES
- 👑 24 / 7 SUPPORT & SERVICE
- 👑 IMMEDIATELY AVAILABLE FROM STOCK
- 👑 TECHNICAL DEPARTMENT & WARRANTY
- 👑 EXCELLENT CUSTOMER SATISFACTION



Stainless steel housing with capacity of 8 x 1/3 GN



Static cooling with foamed evaporator



Dixell digital temperature controller