

GR6N/GR6L

Six Burner Range



Description

Commercial 6 burner gas cooker has a large oven underneath. This is a high performance general purpose oven with linear burning and 6 cast iron pan supports on the hob. Drop down door saves intrusion on space near other equipment in your kitchen.



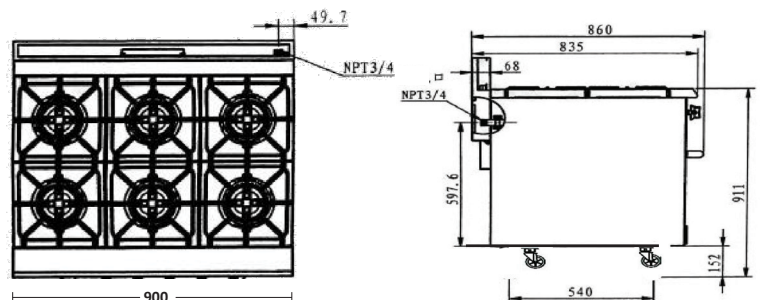
Special Features

- ✓ 6 powerful burners
- ✓ Full size drip tray
- ✓ Cast iron trivets
- ✓ Drop down oven door
- ✓ Large oven capacity
- ✓ NAT or LPG GAS
- ✓ Integrated splash back
- ✓ Heavy duty door handle
- ✓ Quality components
- ✓ Bakelite control knobs
- ✓ Practical design
- ✓ 4 castors, 2 brakes



Technical Specification

DIMENSIONS	W900 x D835 x H911
HOB	6 Burners
OVEN RACKS	Two
POWER	45Kw GAS (150,000BTU)
CONNECTION	3/4" MALE
SHIP WEIGHT	182Kg



Spirit of catering

Copyright 2019 E&OE

